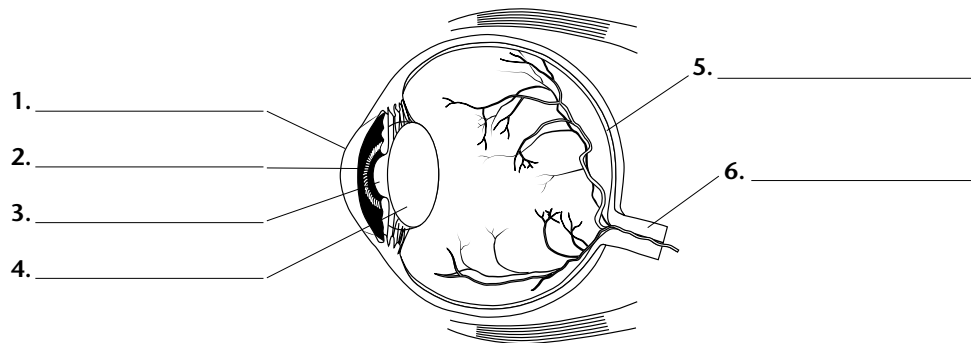


Using Light ▪ 2.4 Review and Reinforce

Seeing Light

Understanding Main Ideas

For items 1–6, label the parts of the eye by filling in the spaces in the diagram below.



For questions 7 and 8, write the answers in the spaces provided.

7. What kind of lenses can enable a nearsighted person to see more clearly?

8. What kind of lenses can enable a farsighted person to see more clearly?

Building Vocabulary

Match each term with its definition by writing the letter of the correct definition in the right column on the line beside the term in the left column.

____ 9. cornea

____ 10. iris

____ 11. pupil

____ 12. retina

____ 13. rods

____ 14. cones

____ 15. nearsighted

____ 16. farsighted

a. hole through which light enters the eye

b. cells in the retina that respond to color

c. transparent front surface of the eye

d. able to see distant objects clearly but nearby objects appear blurry

e. ring of muscle that contracts and expands to change size of the pupil

f. able to see nearby objects clearly but distant objects appear blurry

g. layer of cells that line the inside of the eyeball

h. cells in the retina that respond to small amounts of light